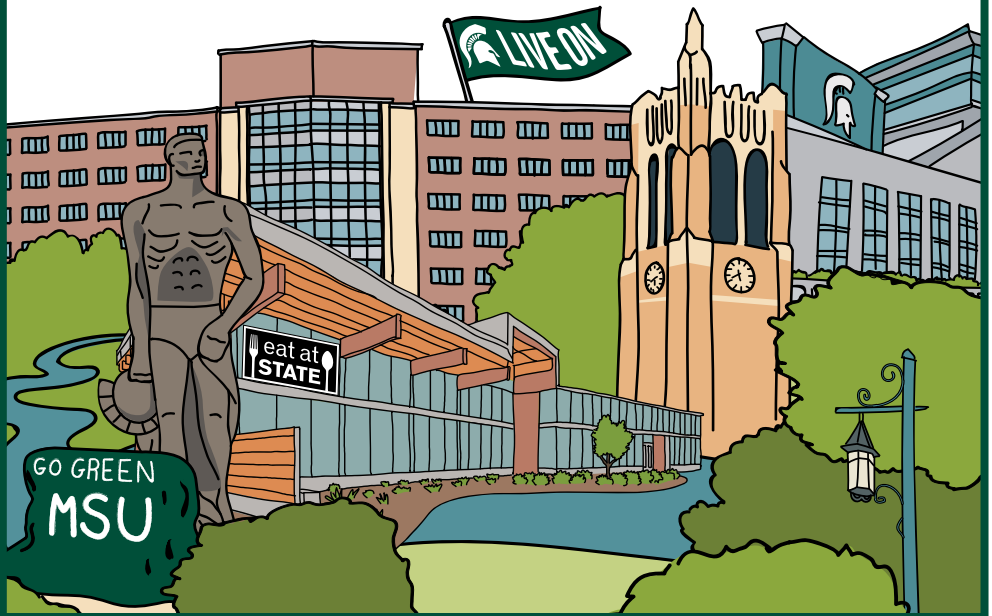




MICHIGAN STATE UNIVERSITY

2021
MOVE-IN
Guide





WELCOME!

The Residence Education and Housing Services and Culinary Services teams have been hard at work this summer to prepare for your arrival this fall! This move-in guide will be a helpful reference for some of the more common questions you may have.

Move-in day is an exciting time for students and their families! This year, move-in will take place Aug. 26-29. Students are able to select their own move-in time via the links sent to their MSU email in July. It is important that you arrive to campus during your assigned move-in day and time to aid in the flow of traffic and ensure a smooth move-in process.

Because of the volume of traffic on campus during move-in, we ask that students only bring two helpers to assist with their move (and leave the family pet at home).

Please make sure to read the latest campus safety measures pertaining to COVID-19 at msu.edu/together-we-will.

As move-in information may be updated through August, visit liveon.msu.edu/move-in for the latest guidance!

MULTIDAY MOVE-IN

Move-in for fall 2021 will take place Aug. 26-29. Move-in is spread out over several days in an effort to keep the process running smoothly. Our goal is to create a more predictable, enjoyable experience for Spartans by managing traffic flow, elevator use, green moving carts and volunteers.

Please adhere to your selected day and time slot in order to make the experience as smooth as possible. If you need to update your move-in time, follow the instructions at liveon.msu.edu/move-in-timeline.

If you have extenuating circumstances where you cannot move in on your assigned day, please arrive after 6 p.m. that day or Monday, Aug. 30 and check in at your Service Center. Students with approved early arrivals will follow check-in instructions sent to them via email.

Please use the MSU App for specific move-in instructions and GPS coordinates for each residence hall!



MSU ID CARD PICKUP

Pick up your MSU ID Aug. 26-29, 9 a.m.-5 p.m. at the Breslin Student Events Center. To pick up your ID, enter the Breslin Center through the southwest gate off Harrison Road. Doors will be labeled alphabetically by last name. Parking is available in Lot 63 or Ramp 7.

[Click here for the detailed pick-up instruction PDF.](#)

Please note, this is for pick up only. If you need to request an MSU ID, contact the ID Office at idoffice.msu.edu.

CONNECT WITH YOUR ROOMMATE BEFORE YOU ARRIVE TO CAMPUS!

If you have suitemates, you will meet them at move-in.

ON MOVE-IN DAY

USE THE LIVE ON WEBSITE AND MSU APP FOR DRIVING DIRECTIONS TO YOUR RESIDENCE HALL. TRAFFIC FLOW WILL BE ALTERED FOR MOVE-IN DAYS.



View detailed driving directions at liveon.msu.edu/moveinparking. When you arrive to your assigned curbside check-in location, staff and volunteers will be ready to give you your keys, access cards, and check-in bag with helpful information and guest dining passes. Please have a valid photo ID ready to show the team member.



Team members will help direct you on where to unload your vehicle and provide green carts to assist with moving your belongings. After belongings have been removed from your vehicle, please relocate your vehicle to your assigned parking lot. If you have accessibility needs in your moving party, let us know as you arrive! (We will not have parking shuttles.)



Your helpers are able to stay as long as necessary to set up your room that day. Please make sure to return green carts to the marked drop-off location, and use the landfill and recycling containers (don't forget to break down boxes!).

*If you have questions after you arrive, please seek out a team member at your hall's service center.

REMEMBER, MICHIGAN IS STILL WARM IN AUGUST! BE SURE TO DRESS ACCORDINGLY.



DINING AT MOVE-IN

ON MOVE-IN DAY

Spartans and up to two guests are invited to enjoy a complimentary meal on move-in day. The student must accompany their guests, present their ID and have a valid dining plan.

Students will receive one voucher upon check-in to their residence hall. The voucher is good for each guest to enjoy one meal in an all-you-care-to-eat dining hall or for grab and go at Holden or Holmes. Guests are also welcome to redeem the voucher for a boxed lunch at designated outdoor locations. A limited number of boxed meals will be offered from 9 a.m. - 6 p.m. each day. Once they run out, the pass must be used for dine in or grab and go at other open locations.

For up-to-date dining hours, please visit eatatstate.com.

2021-22 DINING OPTIONS

MSU Culinary Services (CS) is dedicated to nourishing the campus community by providing flexible, convenient dining options as well as safe, comfortable environments within the dining halls. Ranked by FoodService Director Magazine as number one college and dining program in the nation in 2020, the CS team strives to provide culinary excellence while meeting the evolving needs of student nutrition.

Whether you seek quick, portable selections, menu variety, gluten-friendly choices, vegetarian or vegan cuisine, we provide a host of options to accommodate — including Thrive at Owen Hall, a dining hall serving items certified free of the Big 8 allergens (milk, eggs, shellfish, tree nuts, soy, peanuts, fish and wheat) as well as gluten.

This fall, the CS team will offer a mix of options across campus, including all-you-care-to-eat, enhanced grab and go, and mobile ordering. Students living on campus with a Silver, Gold or Platinum dining plan will also have 12 Combo-X-Change meals per week to redeem at retail locations like Starbucks, Sparty's Market, Panera Bread and FujiSan sushi.

Throughout CS operations, the safety and well-being of guests and team members is our top priority. For current information on any specific safety measures in place, please visit eatatstate.com.

Follow us (@EatAtState)    for the most up-to-date information.

MOVE-IN PARKING ON CAMPUS

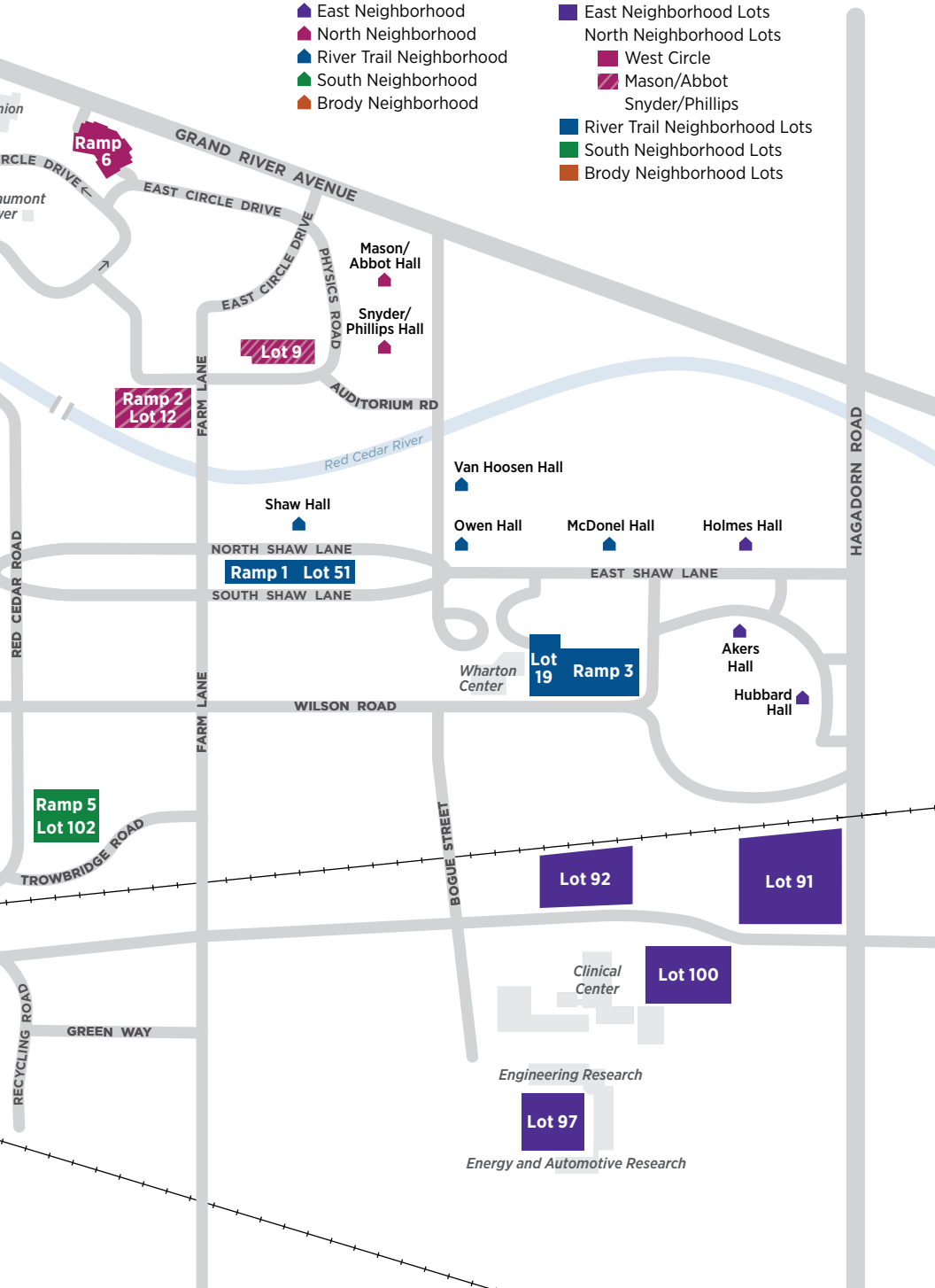


HALLS

- East Neighborhood
- North Neighborhood
- River Trail Neighborhood
- South Neighborhood
- Brody Neighborhood

PARKING

- East Neighborhood Lots
- North Neighborhood Lots
- West Circle
- Mason/Abbot
Snyder/Phillips
- River Trail Neighborhood Lots
- South Neighborhood Lots
- Brody Neighborhood Lots



PACKING LIST

WHAT TO BRING: ESSENTIALS

- ☐ Personal identification and MSU student ID
- ☐ Pillows, sheets (twin XL)
- ☐ Blanket, comforter
- ☐ Towels, washcloths
- ☐ Laundry bag or basket, detergent, fabric softener
- ☐ Cleaning supplies
- ☐ Hangers
- ☐ Refillable water bottle
- ☐ Personal toiletries
- ☐ Hair dryer, styling tools, shampoo/conditioner
- ☐ Medications, first aid supplies
- ☐ School supplies

View packing list at liveon.msu.edu/whattobring.

WHAT TO BRING: OPTIONAL

- ☐ Compact microwave
- ☐ Mini-refrigerator
- ☐ Hand sanitizer
- ☐ Fan
- ☐ TV
- ☐ Surge protector/power strip
- ☐ Dishes
- ☐ Iron, ironing board
- ☐ Thermometer
- ☐ Face coverings

PACKAGES CAN BEGIN ARRIVING TO RESIDENCE HALLS ON
AUG. 11 AND PICKED UP AT SERVICE CENTERS

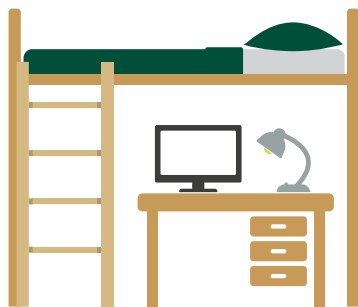
DO NOT BRING

- ☐ Indoor grills
- ☐ Toaster/oven
- ☐ Wi-Fi router
- ☐ Halogen lamps
- ☐ Dry-erase boards (not allowed on doors)
- ☐ Candles
- ☐ Weapons of any kind
- ☐ Air fryers
- ☐ Personal AC units

BED CONFIGURATION OPTIONS



TRUNDLE This setup allows for limited storage space below.



LOFTED Lofted beds allow enough room below for desks, shelves, futons, etc. This is the standard bed configuration in all halls.

Double rooms will be set to one lofted and one trundled bed at move-in, unless the layout does not allow for this. Akers units will have three lofted beds and one trundled bed. While bed adjustments cannot be accommodated during move-in, residents can request a bed adjustment by submitting a maintenance request at liveon.msu.edu. Facilities will begin bed adjustments after Sept. 14.

WHAT'S IN YOUR ROOM?

Modular furniture is provided in all rooms. Additional pieces of furniture may be added.

- Loftable bed
- Dresser
- Closet
- Twin XL mattress
- Overhead lights/blinds
- Trash can
- Desk and desk chair

Optional: Included with your room is the weekly exchange of a university-provided linen packet of two white sheets, a pillow case and two towels. Students may also purchase carpet and linens for their room from the MSU University Activities Board. Visit uabevents.com/LinensProgram for details.

Furniture cannot be removed from rooms.

CHECK OUT THE **360-DEGREE VIRTUAL TOURS** FOR A VIEW OF OUR ROOMS AT

liveon.msu.edu/360tours.

CONNECT AND ENGAGE

After you've moved in and are getting settled in your new space, be on the lookout for an email from one of our Residence Education team members. They will reach out about your first community meeting and upcoming fall programming. Although we need to follow health and safety protocols this semester, we want everyone to feel welcome and connected to campus and their fellow Spartans!

This is your home during your time at MSU, and we strive to ensure all Spartans have a positive experience while living on campus. There are many opportunities for students to get involved and learn about the ways in which we are here to support you. Visit liveon.msu.edu/campus-life to find links to the many ways in which you can get involved.

SERVICE CENTERS

Your residence hall service center is your one-stop shop for check-in and check-out, picking up mail and packages, grabbing a temporary key or access card, exchanging linen packets, checking out a vacuum or broom, and much more! View locations and hours at liveon.msu.edu/servicecenters.

PACK UP. PITCH IN.

Recycling stations are located outside of residence halls. You are responsible for separating your materials and breaking down boxes. Thank you for doing your part.

As part of ongoing sustainability efforts by MSU, the Pack Up. Pitch In. program is an important part of move-in. For more than 20 years, Pack Up. Pitch In. has aided in the collection of move-in materials such as cardboard and polystyrene. MSU provides extensive recycling practices year-round throughout campus, and collection bins can be found in each residence hall.

DIVERSITY, EQUITY AND INCLUSION AT MSU

We are committed to and focused on fostering a diverse, inclusive and safe environment for all Spartans living in our on-campus communities. Please visit liveon.msu.edu/campus-life/diversity-equity-and-inclusion for a list of resources and ways to get involved.

STAY CONNECTED

Visit liveon.msu.edu and follow us on Instagram, Facebook and Twitter at @MSULiveOn for the latest move-in information and fall housing updates.

Information can change, and we promise to do our best to keep you up to date through these channels.

Watch the Fall Welcome site for fall welcome events and university on-boarding information: studentlife.msu.edu/fall-welcome.

View the MSU Together We Will website to see how the university is preparing and working together to ensure our campus community remains healthy and safe: msu.edu/together-we-will.



HOUSING ASSIGNMENTS OFFICE

1-877-954-8366

liveon@msu.edu
liveon.msu.edu

CULINARY SERVICES

517-884-0660

info@eatatstate.com
eatatstate.com

Residence Education and Housing Services
Housing Assignments Office
Michigan State University
1855 Place
550 S. Harrison Road
East Lansing, MI 48823-5117

