



**MICHIGAN STATE UNIVERSITY**

*Spring 2021*

# **MOVE-IN**

*Guide*





# WELCOME!

The Residence Education and Housing Services and Culinary Services teams are excited to welcome you to MSU! This move-in guide will be a helpful reference for some of the more common questions you may have and will also provide some insight into how we are working to keep you safe.

This spring, move-in will be by appointment, Jan. 6-10. For the latest move-in details, visit [liveon.msu.edu/move-in-timeline](https://liveon.msu.edu/move-in-timeline).

Because of restrictions due to COVID-19, we ask that you bring no more than two people to assist you in moving into your new space (and leave the family pet at home). We are excited to see you on campus and want this to be a safe, yet fun experience for everyone!

To learn more about what we're doing to keep students and team members healthy and campus spaces safe, visit: [go.msu.edu/rhs-covid-response](https://go.msu.edu/rhs-covid-response).

If you or anyone in your move-in party has been diagnosed with COVID-19, are experiencing symptoms of COVID-19, or have come in close contact with someone who has tested positive for COVID-19, we request that you and/or your impacted guests self-isolate for at least 14 days prior to coming to campus.

# EAT AT STATE

## DINING

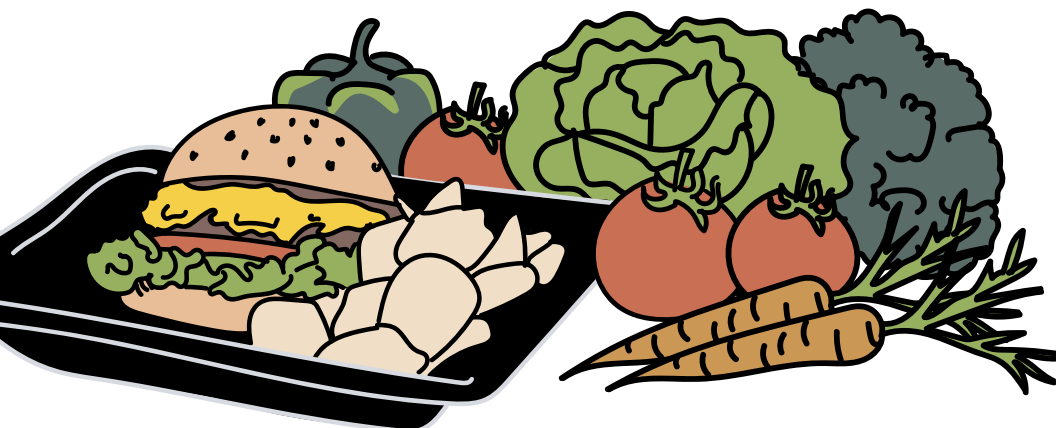
MSU Culinary Services (CS) is dedicated to nourishing the campus community by providing flexible, convenient dining options as well as safe, comfortable environments within the dining halls. Ranked by FoodService Director Magazine as number one college and dining program in the nation in 2020, the CS team strives to provide culinary excellence while meeting the evolving needs of student nutrition.

Whether you seek quick, portable selections, late night options, gluten-friendly choices, vegetarian or vegan cuisine, we provide a host of options to accommodate your dietary needs. Our registered dietitians are also available to assist those with specific needs.

Every residential dining hall has grab and go available so you can get your food quickly, with no hassle, and be on your way. The full menu is available in your dining plan as grab and go, and you'll be able to carry out up to three containers per access. We also have mobile ordering available.

In response to COVID-19, numerous processes have been implemented to protect the safety and well-being of team members and guests throughout Culinary Services operations. For more information on dining including safety measures, visit [eatatstate.com/covid19](https://eatatstate.com/covid19).

**Follow us (@EatAtState)    for the most up-to-date information.**



# PACKING LIST

## WHAT TO BRING: ESSENTIALS

- ☐ Face coverings
- ☐ Personal identification and MSU student ID
- ☐ Pillows, sheets (twin XL)
- ☐ Blanket, comforter
- ☐ Towels, washcloths
- ☐ Laundry bag or basket, detergent, fabric softener
- ☐ Cleaning supplies
- ☐ Hangers
- ☐ Refillable water bottle
- ☐ Personal toiletries
- ☐ Hair dryer, styling tools, shampoo/conditioner
- ☐ Medications, first aid supplies
- ☐ School supplies

**Optional:** Included with your room is the weekly exchange of a university-provided linen packet of two white sheets, a pillow case and two towels.

## WHAT TO BRING: OPTIONAL

- ☐ Compact microwave
- ☐ Mini-refrigerator
- ☐ Hand sanitizer
- ☐ Fan
- ☐ TV
- ☐ Surge protector/power strip
- ☐ Dishes
- ☐ Iron, ironing board
- ☐ Thermometer

## DO NOT BRING

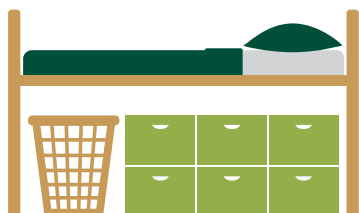
- ⊗ Wi-Fi router  
(affects existing Wi-Fi)
- ⊗ Indoor grills
- ⊗ Toaster/oven
- ⊗ Halogen lamps
- ⊗ Dry-erase boards  
(not allowed on doors)
- ⊗ Candles
- ⊗ Weapons of any kind

## PACKAGES

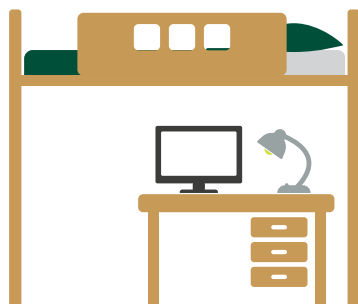
If you wish to ship items before arriving to campus, packages can begin arriving Jan. 6. Please do not ship them to arrive earlier than that date. Items will be delivered to your neighborhood's open service center. This may be located in a different hall than where you are living. Be sure to check your open service center when you arrive to campus!

# ROOM CONFIGURATIONS

Most rooms are set to have one lofted and one trundled bed and two sets of furniture.



TRUNDLE



LOFTED

## WHAT'S IN YOUR ROOM?

Modular furniture is provided in all rooms. Additional pieces of furniture may be added.

- Bed
- Twin XL mattress
- Desk and desk chair
- Dresser
- Overhead lights/blinds
- Closet
- Trash can

CHECK OUT THE **360-DEGREE VIRTUAL TOURS** FOR A VIEW OF YOUR ROOM AT

*[liveon.msu.edu/360tours](https://liveon.msu.edu/360tours)*

## MAINTENANCE REQUESTS

Need a repair in your room? Please visit [liveon.msu.edu/maintenance](https://liveon.msu.edu/maintenance) to submit a maintenance request. If you have an immediate need for service due to an emergency such as a flood, broken window or other similar events, please contact your service center.

After you complete the maintenance request form, a team member will contact you to schedule the service(s). If you have been diagnosed with COVID-19, are experiencing symptoms of COVID-19 or have had close contact with someone who has been diagnosed with COVID-19, we will have to limit services to emergency only.

## CONNECT AND ENGAGE

After you've moved in and are getting settled in your new space, be on the lookout for an email from one of our Residence Education team members. They will reach out about your first community meeting and upcoming spring programming. Although we have to keep our physical distance this semester, we want everyone to feel welcome and connected to campus and their fellow Spartans!

## SERVICE CENTERS

Visit your hall's Service Center for package pick up, rental items, linen exchange and more. [liveon.msu.edu/servicecenters](https://liveon.msu.edu/servicecenters).

## DIVERSITY, EQUITY AND INCLUSION AT MSU

We are committed to and focused on fostering a diverse, inclusive and safe environment for all Spartans living in our on-campus communities.

This is your home during your time at MSU, and we strive to ensure all Spartans have a positive experience while living on campus. There are many opportunities for students to get involved and learn about the ways in which we are here to support you. Visit [liveon.msu.edu/campus-life](https://liveon.msu.edu/campus-life) to find links to the many ways in which you can get involved.

# PACK UP. PITCH IN.

As part of ongoing sustainability efforts by MSU, the Pack Up. Pitch In. program is an important part of move-in. For more than 20 years, Pack Up. Pitch In. has aided in the collection of move-in materials such as cardboard and polystyrene. MSU provides extensive recycling practices year-round throughout campus, and collection bins can be found in each residence hall.

# COVID-19 SPRING 2021 HOUSING INFORMATION

While we are still committed to providing a welcoming, secure, and successful student experience in our residence halls, please note that there are many health and safety measures students need to adhere to while on campus. All residential students are held to the MSU Community Compact. This includes:

- Wearing a face-covering outdoors, as well as indoors when not in your closed room
- Maintaining physical distancing, and practicing good hygiene
- Residents are also required to complete the MSU Health Screening form each day.
- Additionally, residents will be required to participate in the COVID-19 Early Detection Program

## HEALTH SCREENING FORM

As part of the MSU Community Compact, all students must fill out the health screening form ([covidhealthscreen.msu.edu](https://covidhealthscreen.msu.edu)) prior to coming to campus. All on-campus residents must complete the form daily.

## COVID-19 EARLY DETECTION PROGRAM




For the spring semester, MSU will require participation in the COVID-19 Early Detection Program for students living on campus and undergraduate students coming to campus during the spring semester due to, for example, in-person classes, labs or work. Residents will complete their Spring 2021 Housing Contract and the COVID-19 Early Detection Program consent form prior to arrival to campus.

Please visit [liveon.msu.edu/spring-2021-housing](https://liveon.msu.edu/spring-2021-housing) for additional details.

Download the official app of Michigan State University ([msu.app](https://msu.app)) to keep up to date with the latest news and events as well as explore campus maps and review dining options!



# STAY CONNECTED

Please continue to visit [liveon.msu.edu](https://liveon.msu.edu) and our social media    (@MSULiveOn) for the latest move-in and housing updates.

**Information can change, and we promise to do our best to keep you up to date through these channels.**

View the MSU Together We Will website to see how the university is preparing and working together to ensure our campus community remains healthy and safe: [msu.edu/together-we-will](https://msu.edu/together-we-will).



## HOUSING ASSIGNMENTS OFFICE

1-877-954-8366

[liveon@msu.edu](mailto:liveon@msu.edu)

[liveon.msu.edu](https://liveon.msu.edu)



## CULINARY SERVICES

517-884-0660

[info@eatatstate.com](mailto:info@eatatstate.com)

[eatatstate.com](https://eatatstate.com)